

Knights Landing

Sacramento

SCHISM: Drought Applications

Vernalis

Eli Ateljevich, PhD, PE

Delta Modeling Section, DWR

April 13, 2016

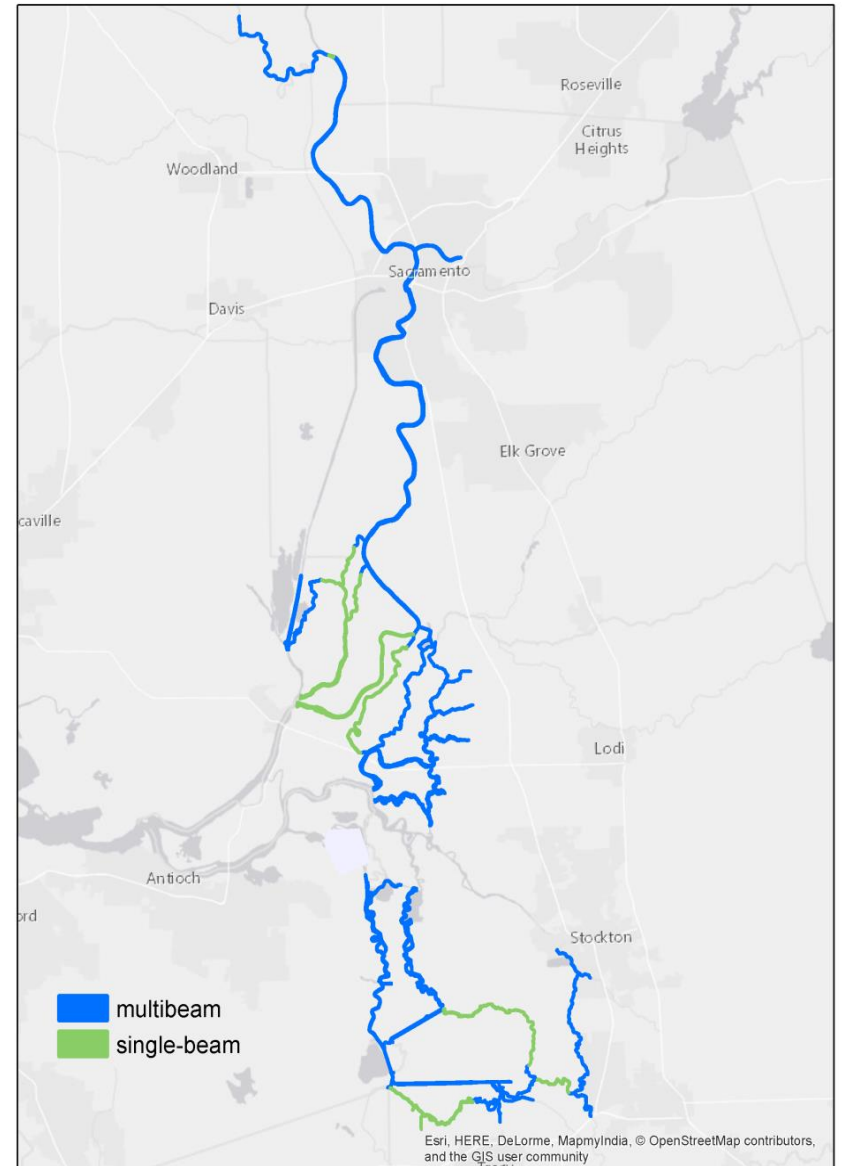


Update: SCHISM 2016 Release

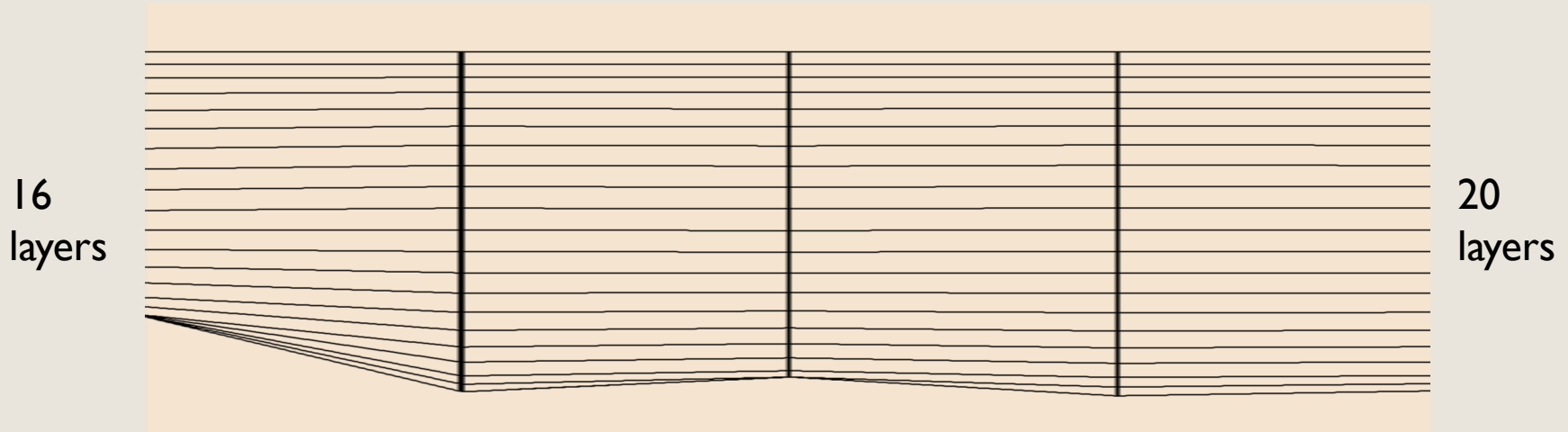
- Bathymetry update
- LSC2 Vertical grid: adaptive vertical resolution,
 - More efficient in shallows
 - 2D flood plus 3D estuary
- Algorithm dev: quads, faster transport
- Temperature calibration
- Flood calibration for 2006

Bathymetry Development

- More 2m
- Extensive New Data
- USGS collaboration

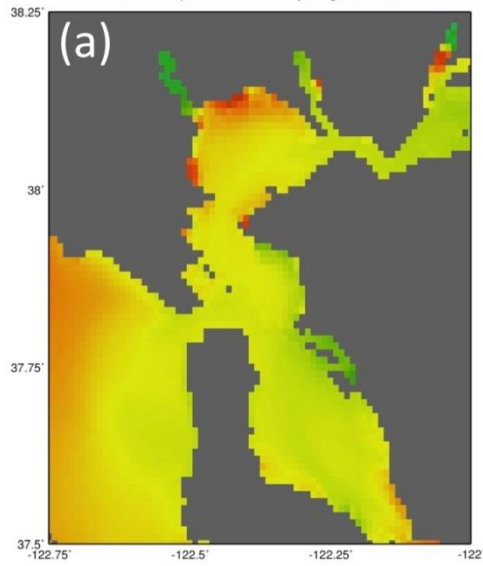


LSC2 Adaptive Vertical Mesh

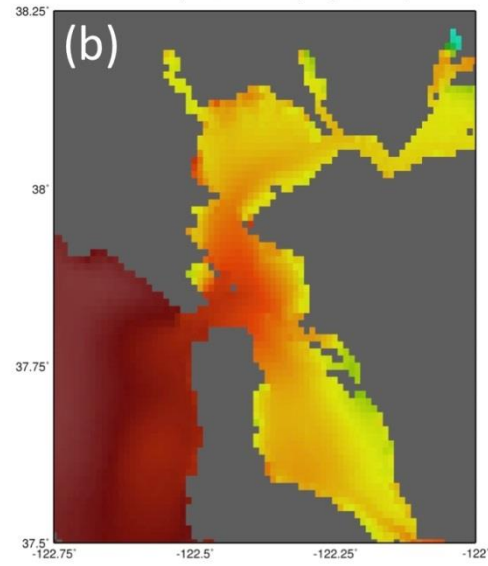


- Originally a terrain conforming “S” grid
- Helps with diapycnal mixing/pressure discretization
- Also fixes cross-scale problem deep-shallow

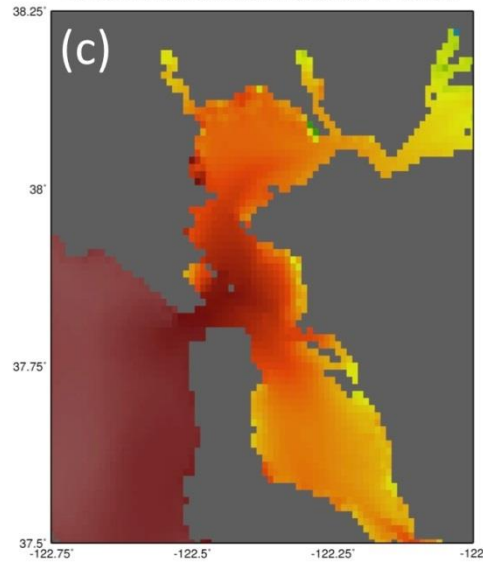
SCHISM Temperature Anomaly August 1-10, 2014



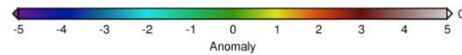
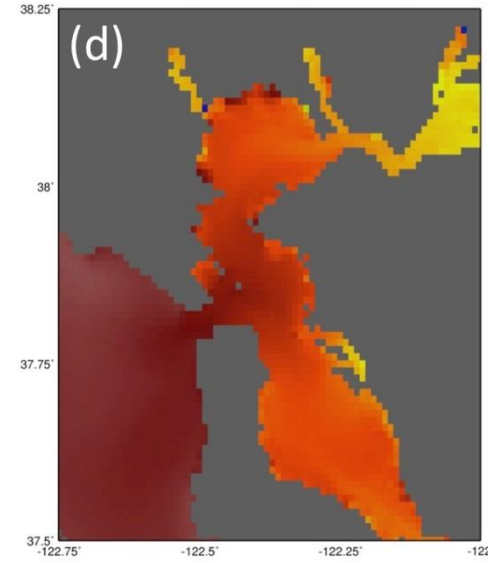
SCHISM Temperature Anomaly August 21-31, 2014



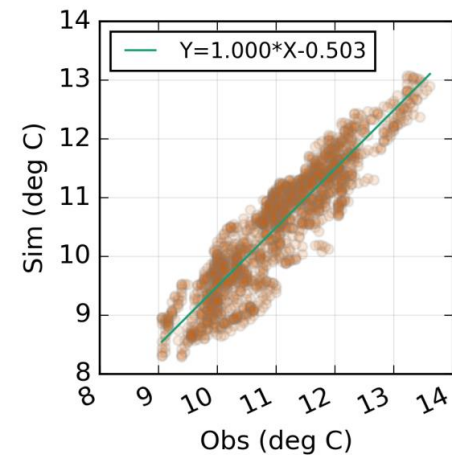
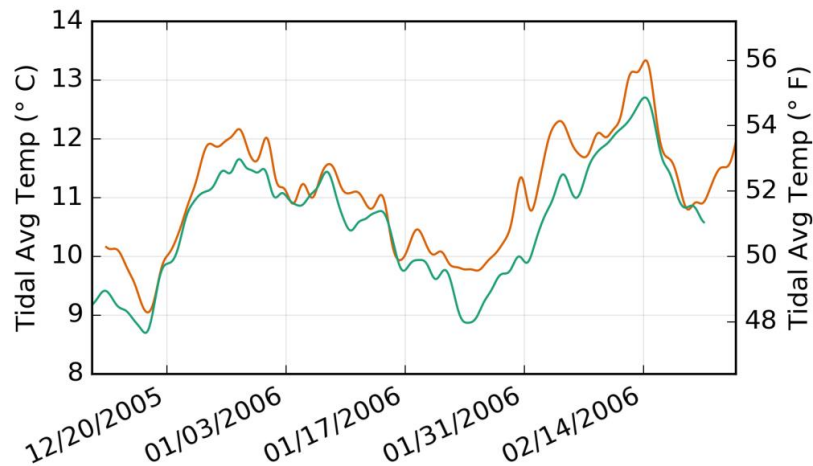
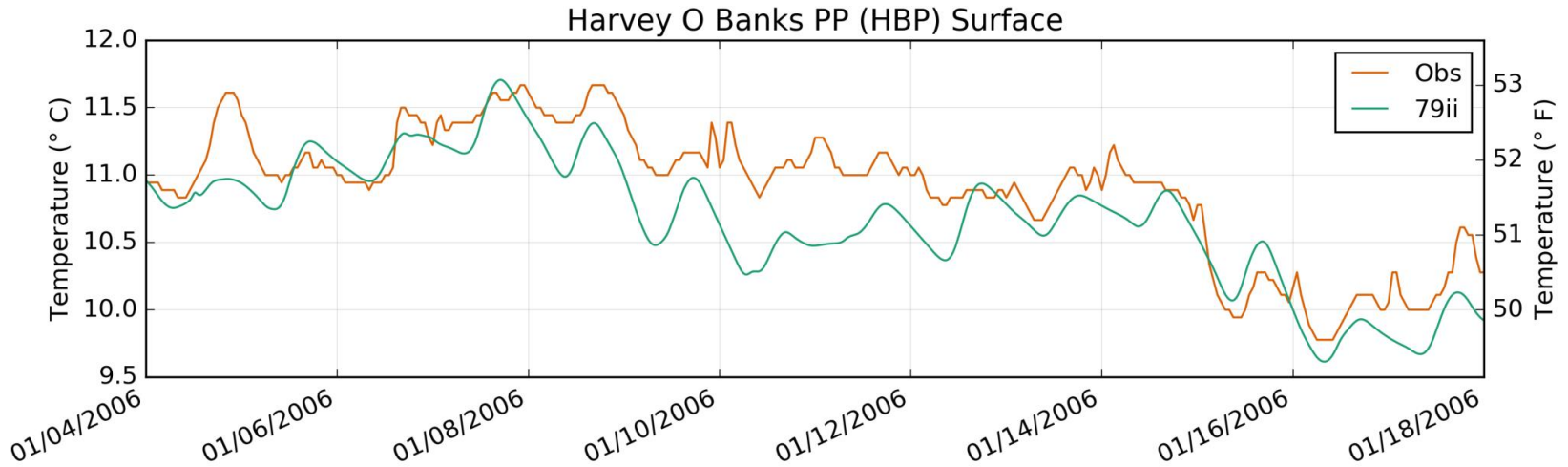
SCHISM Temperature Anomaly September 11-20, 2014



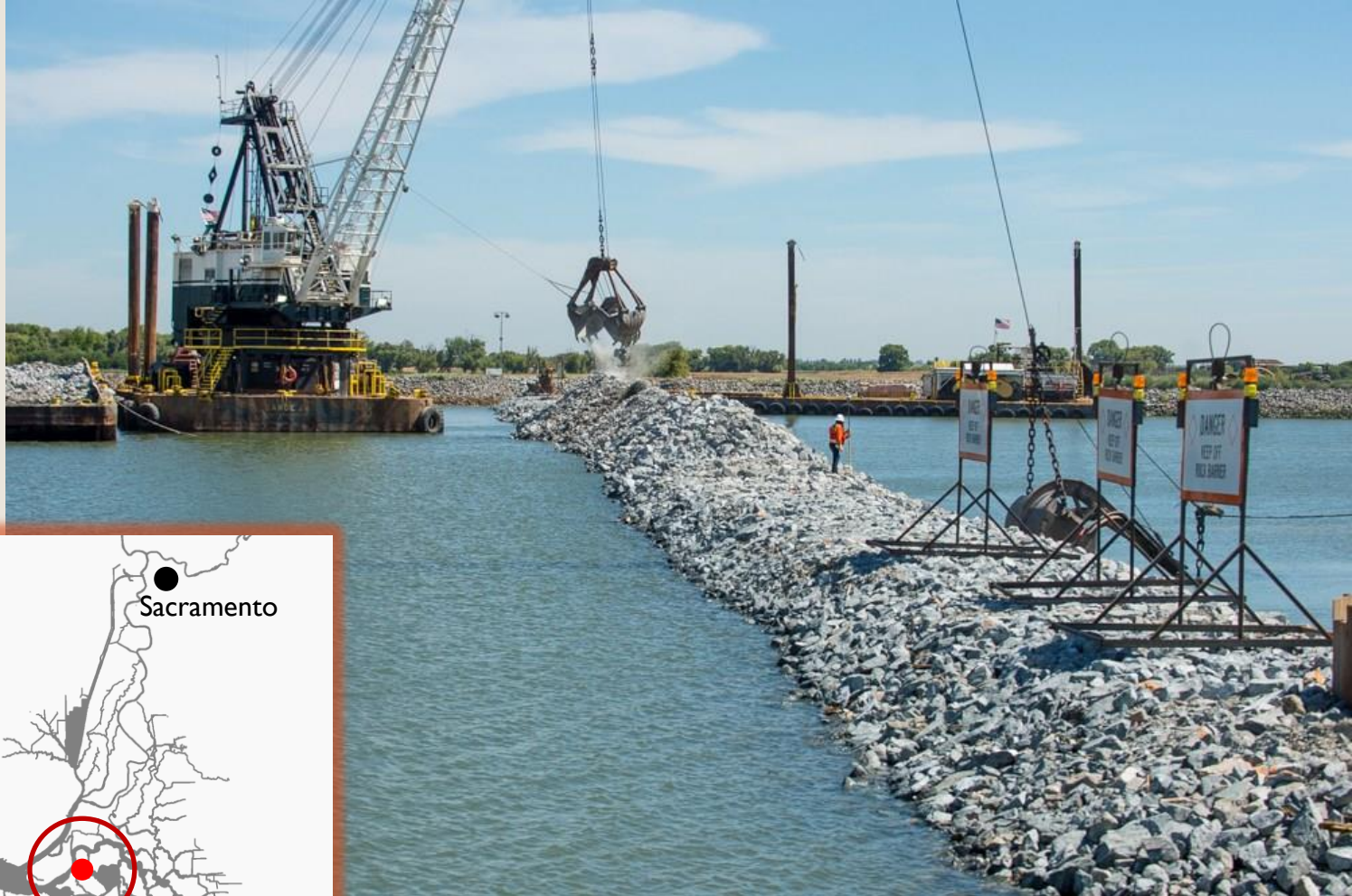
SCHISM Temperature Anomaly October 1-10, 2014



Temperature

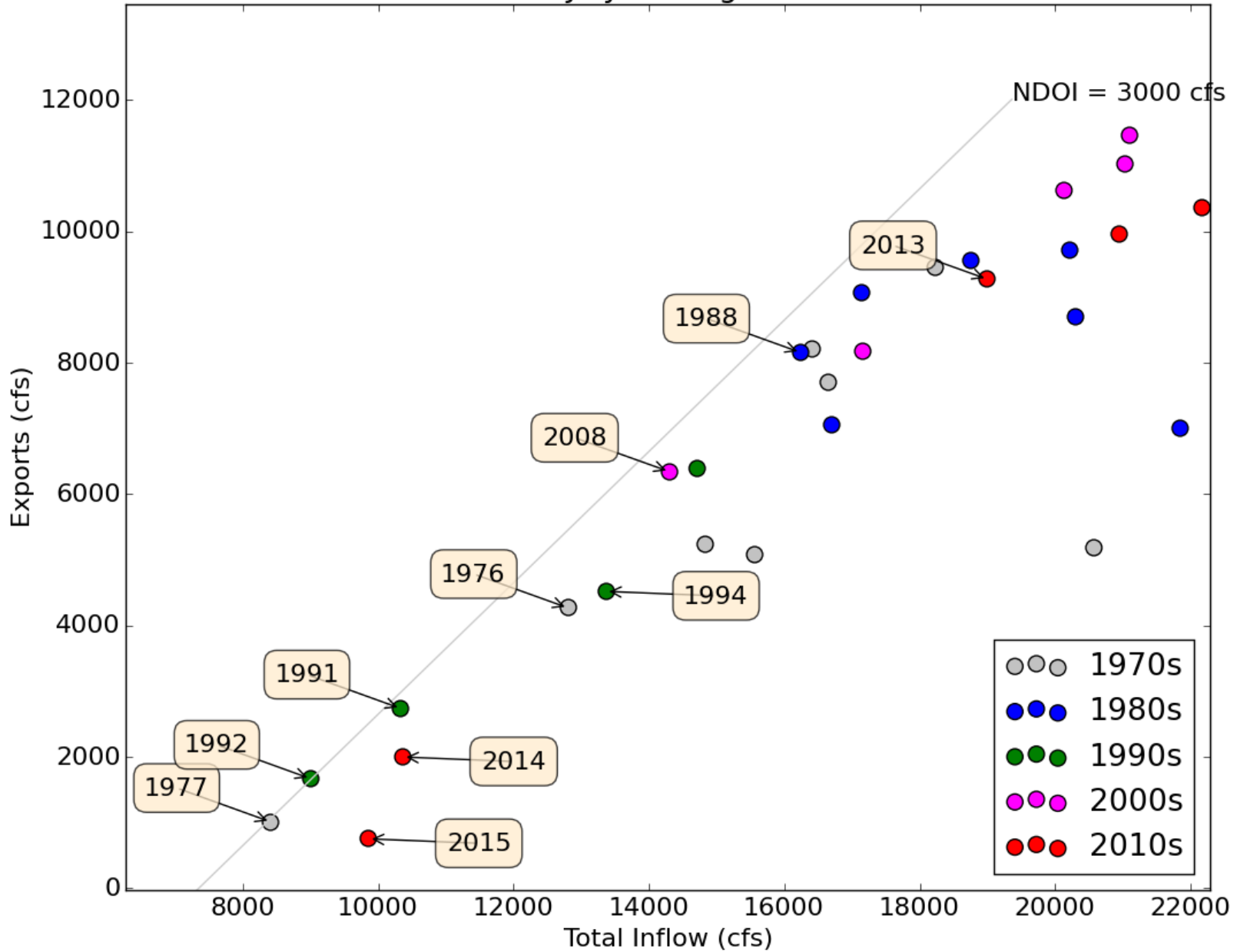


79ii: RMSE=0.652 deg C Lag=119 min Bias_φ=-0.449 NSE_φ=0.539 R_φ=0.923



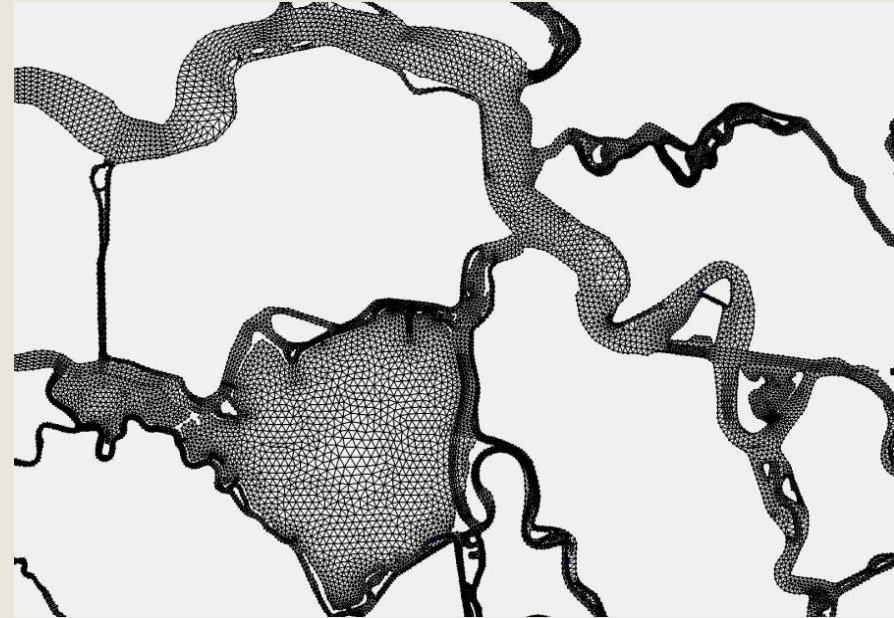
False River Emergency Barrier 2015

July Averages

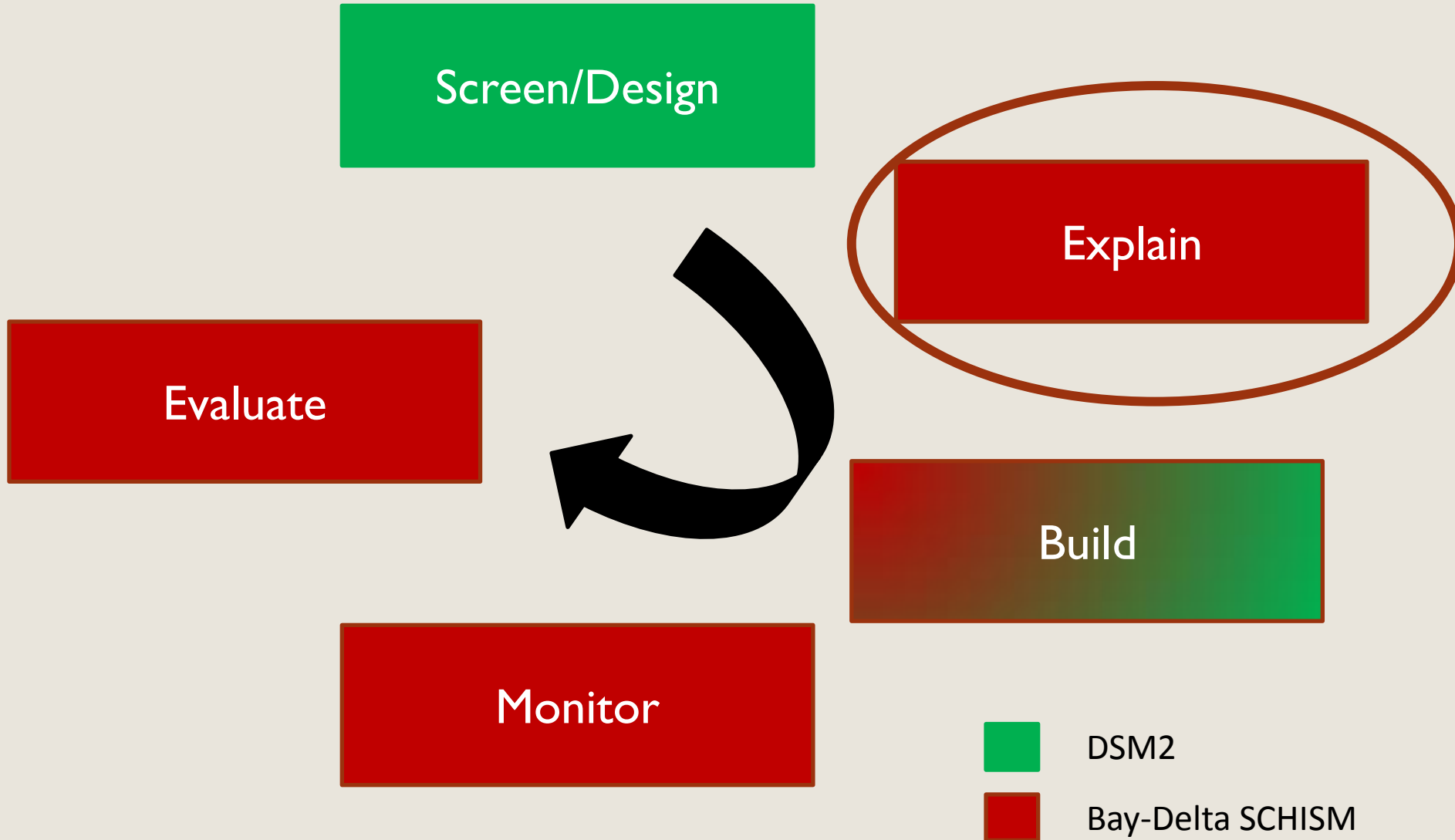


Delta Modeling Drought Tools

- DSM2
 - 1D
 - Long history
 - Screening/design
- Bay-Delta SCHISM
 - 3D
 - Farallones to Knights Landing
 - 3 years of production use
- 6-10 additional monitoring stations for flow/wq



Drought Modeling and Data Analysis

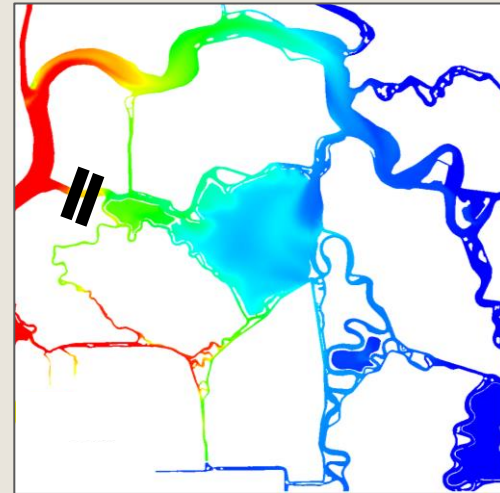
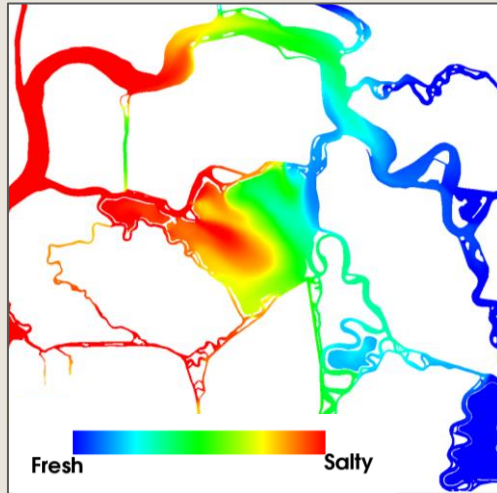


Tidal Pumping

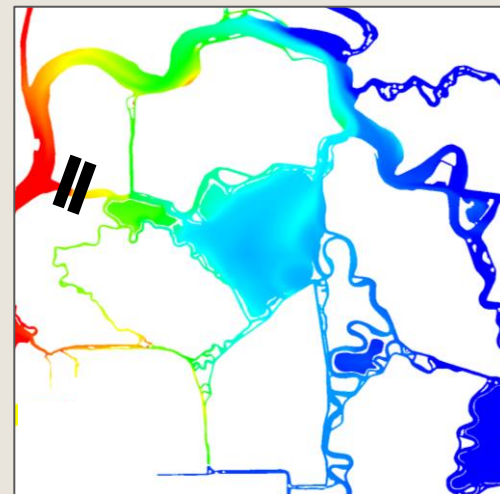
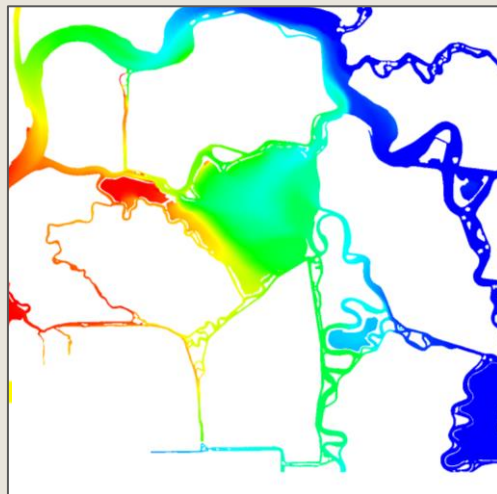
No Barrier

Barrier

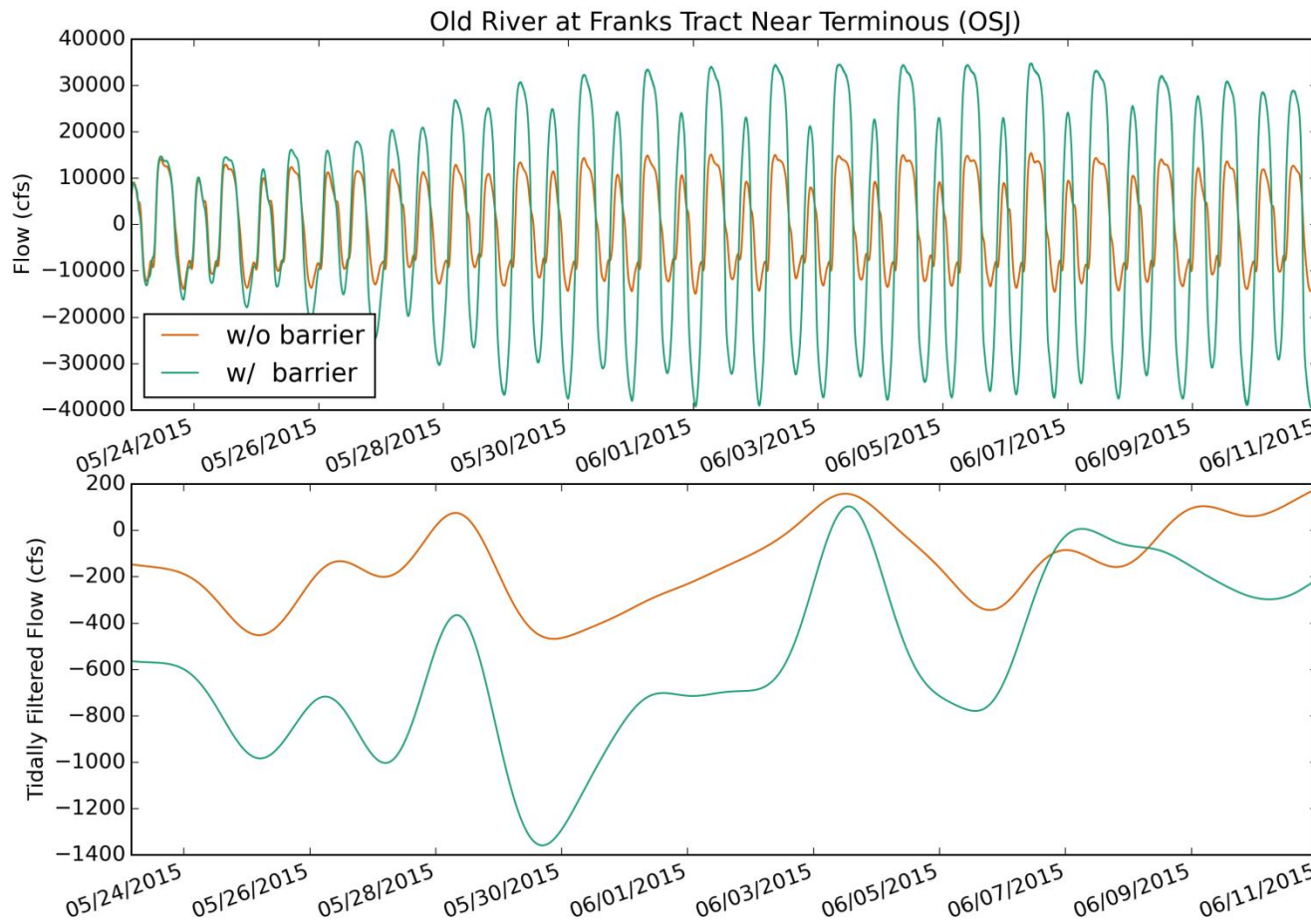
Flood



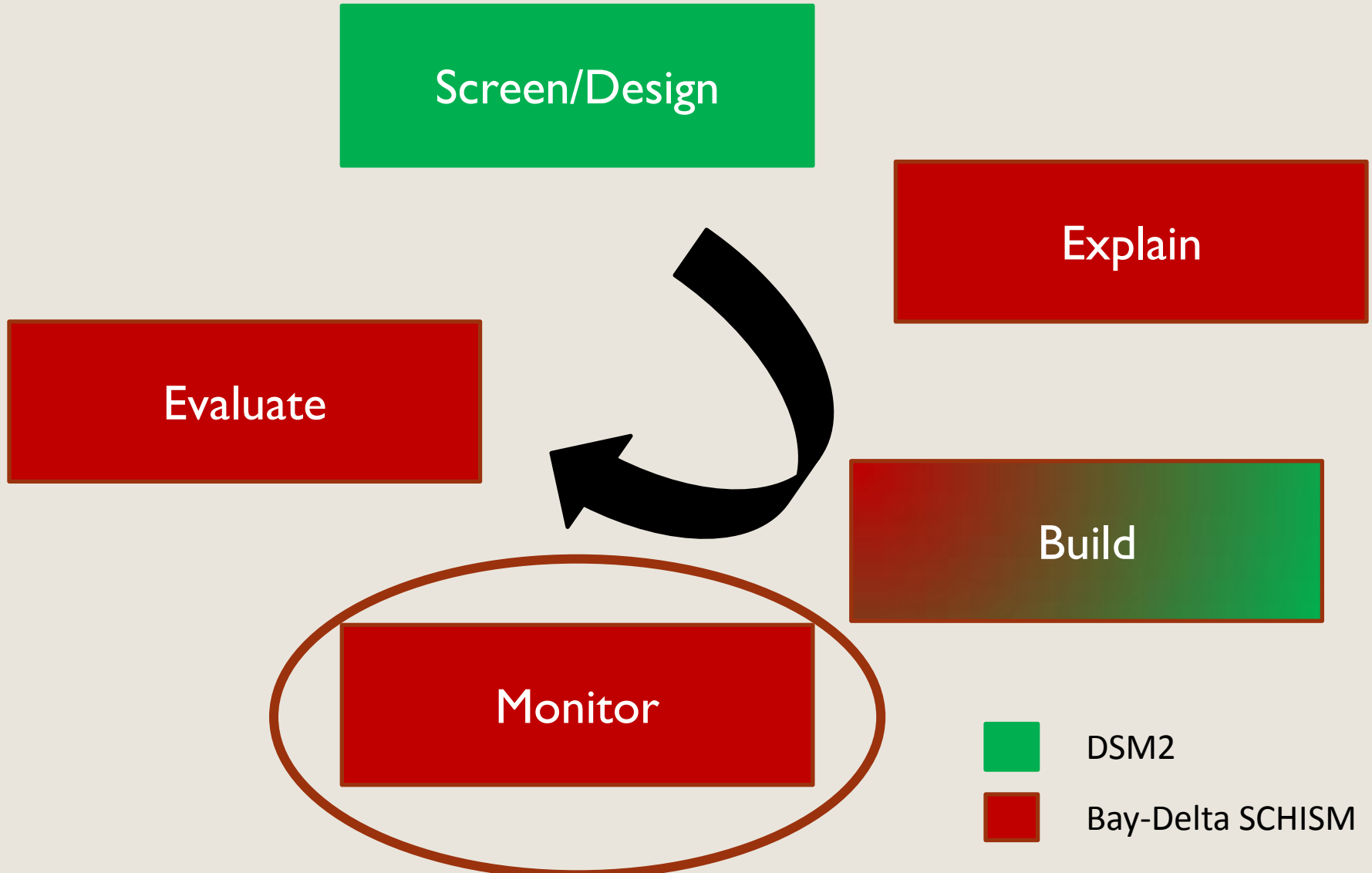
Ebb



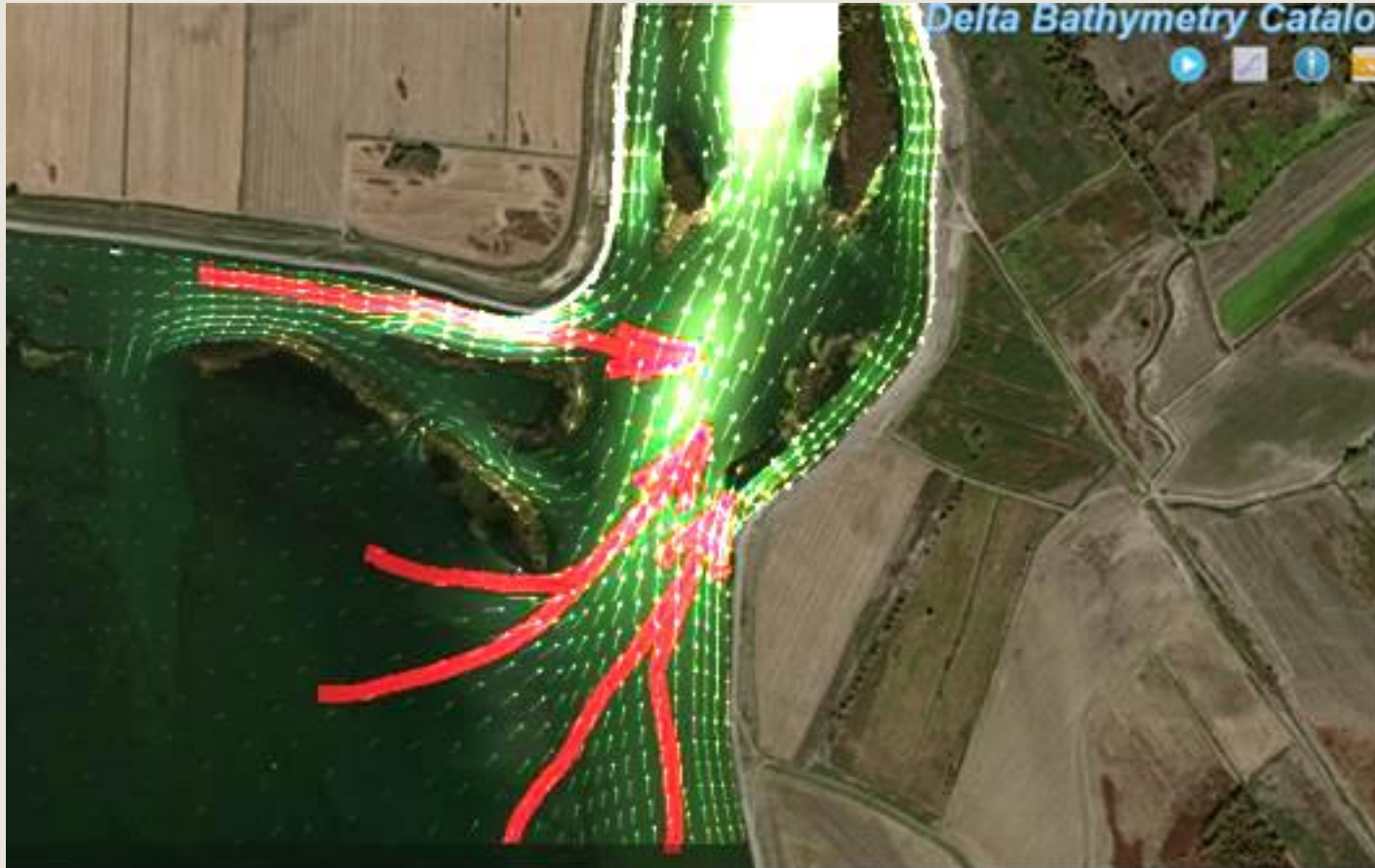
Change in Tidal Flow/Range



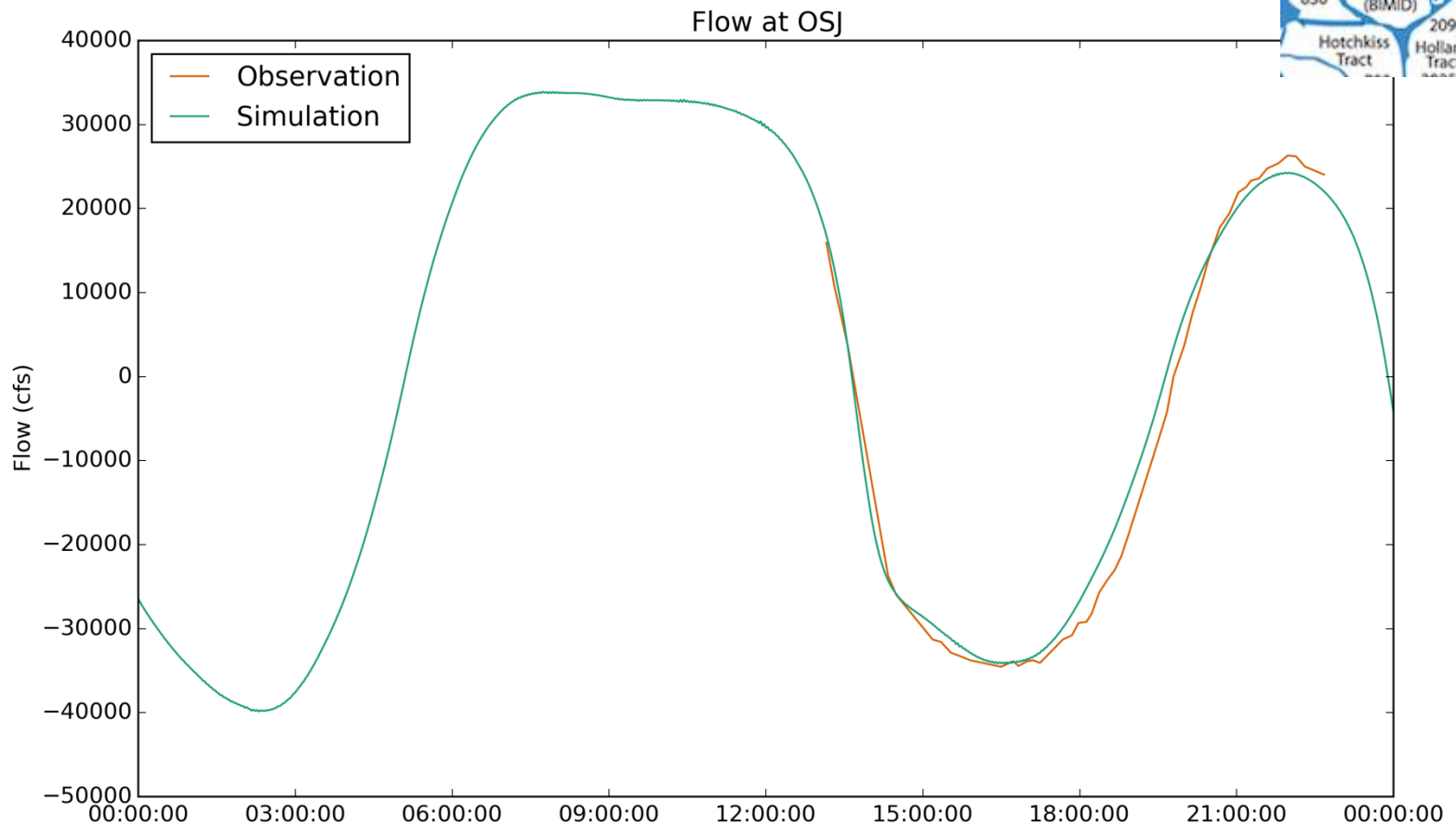
Drought Modeling and Data Analysis



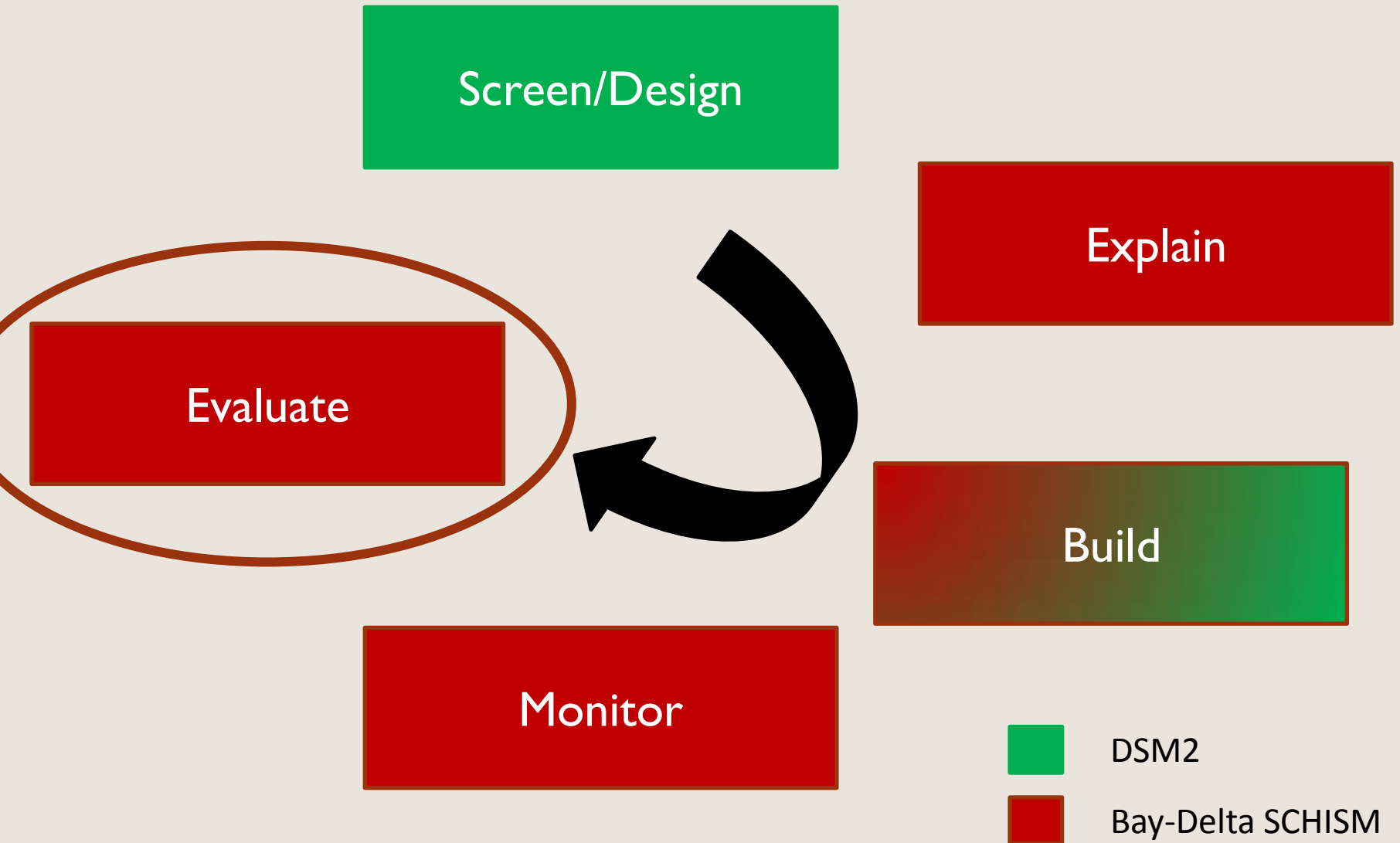
Prioritize Bathymetry Monitoring



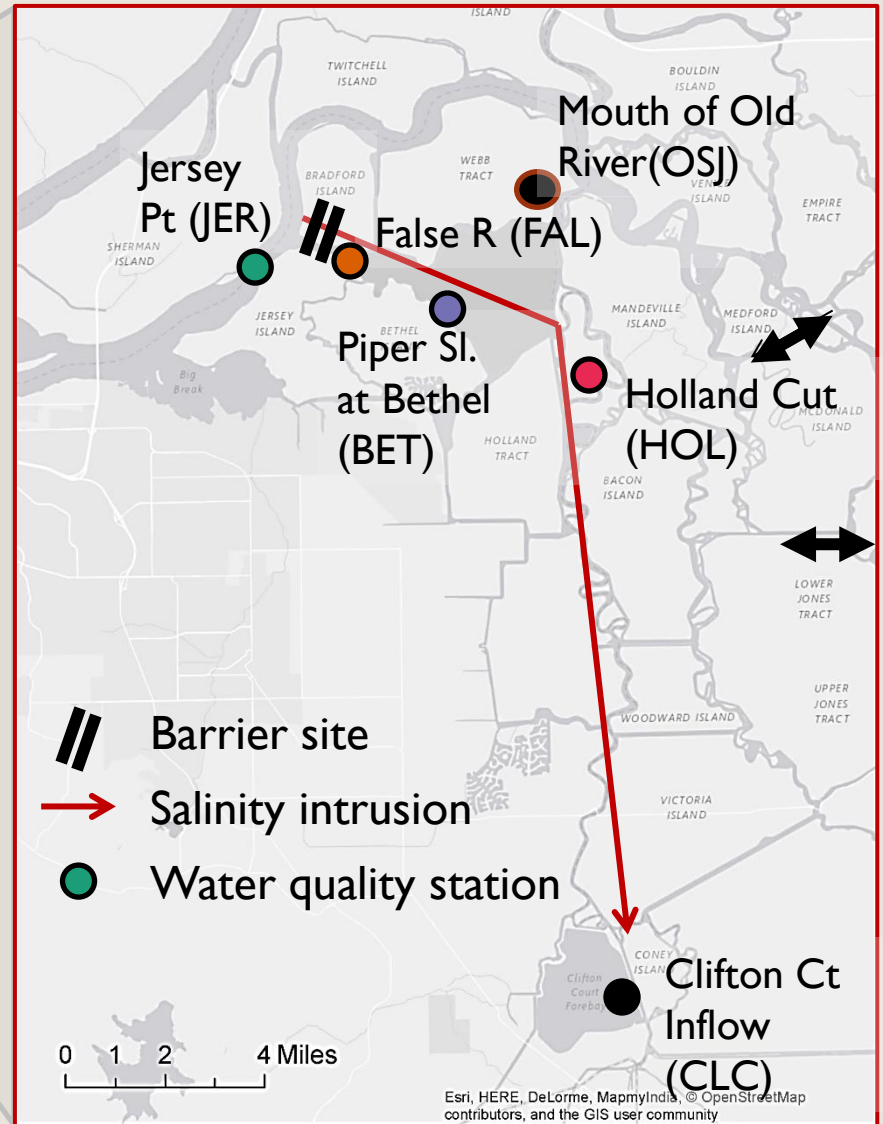
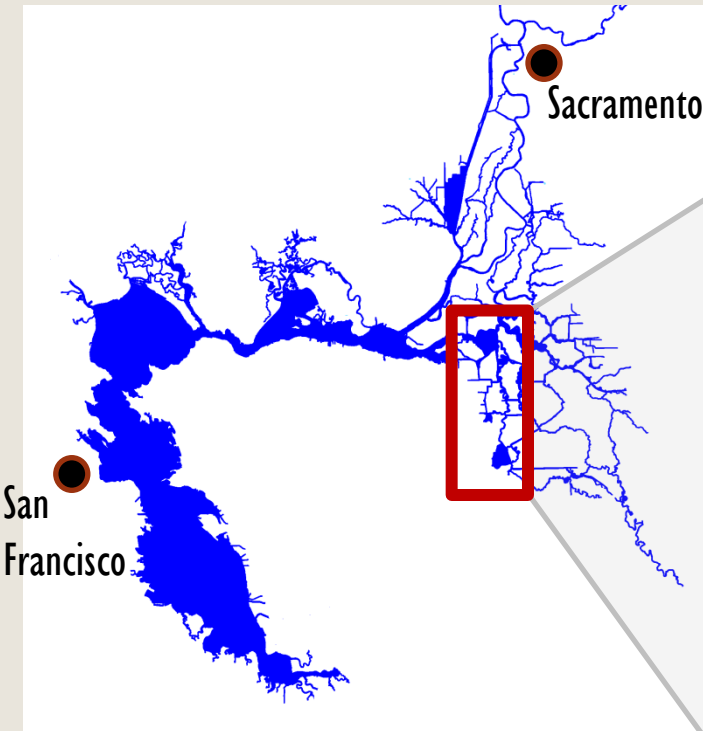
Flow Measurement



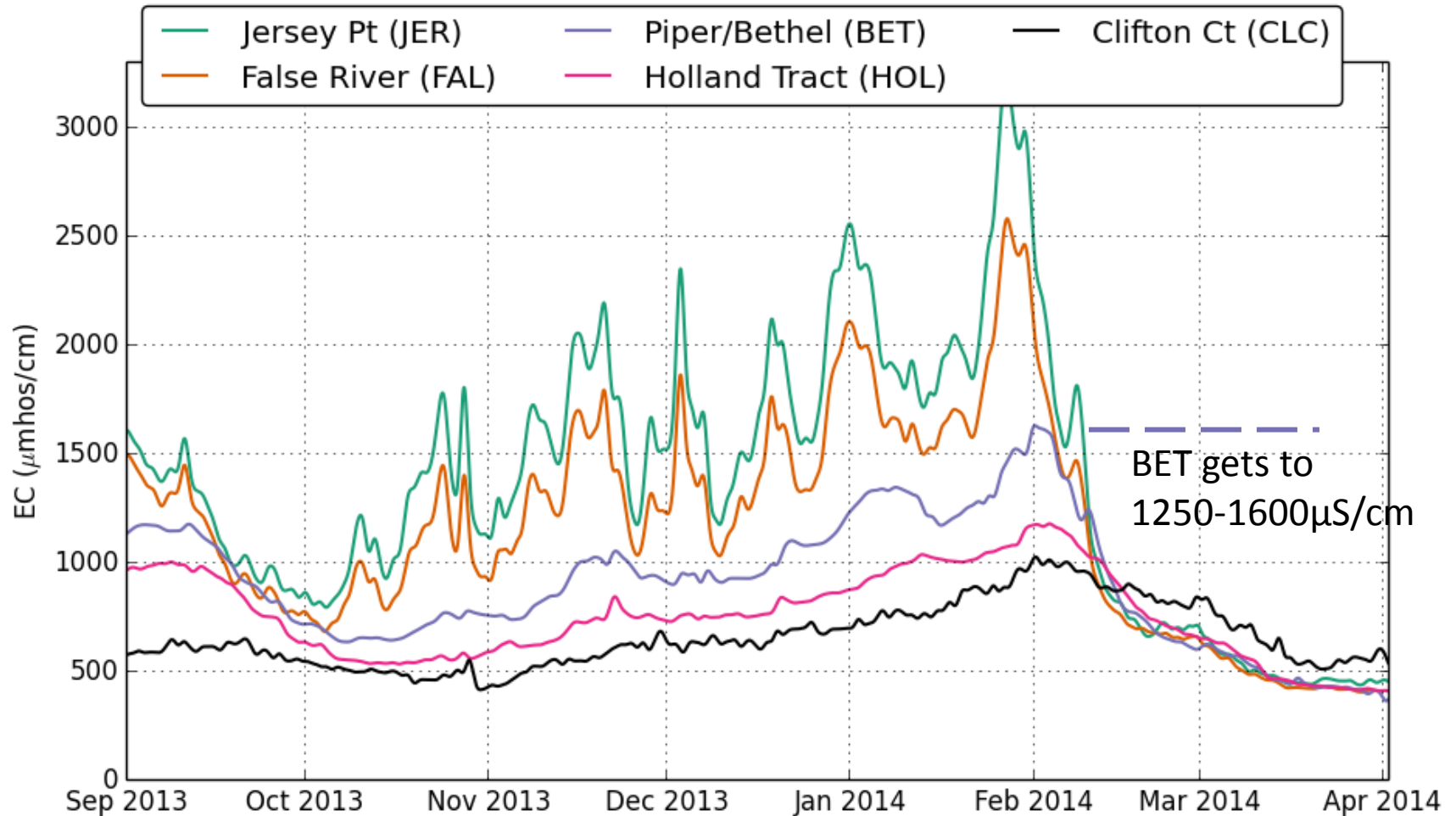
Drought Modeling and Data Analysis



Salinity Propagation



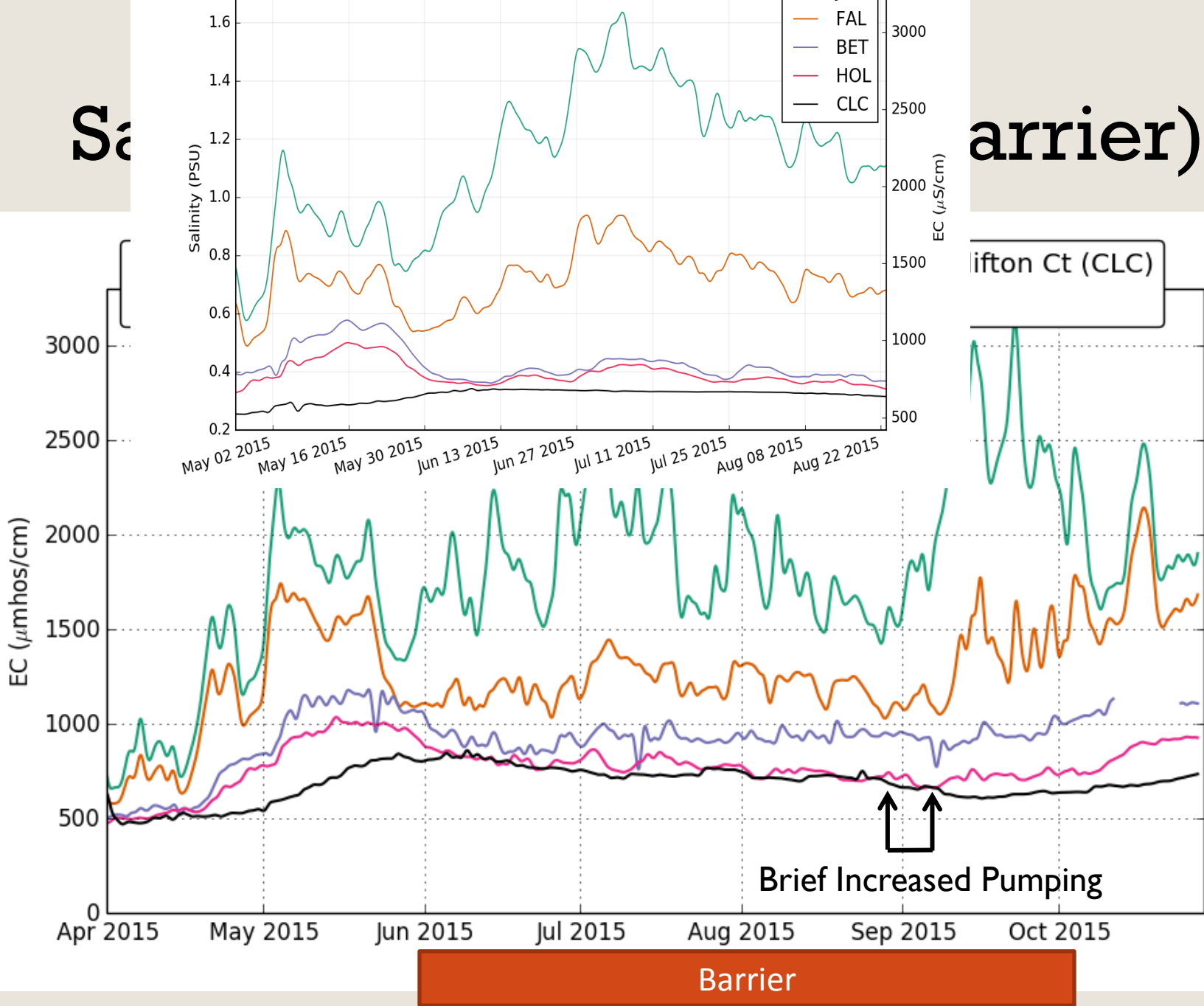
Salinity Intrusion 2014 (no barrier)



All values tidally filtered

Sal

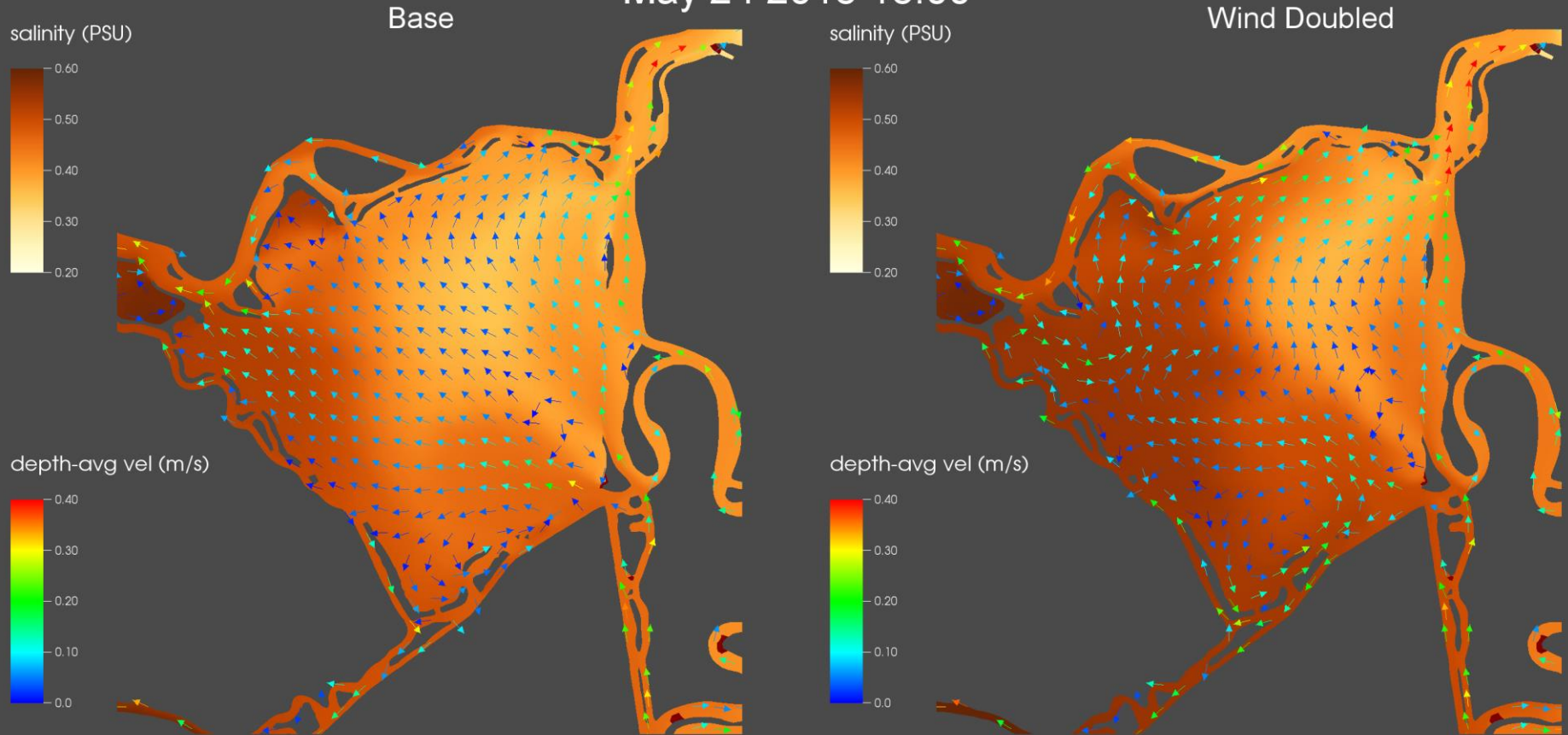
carrier)



All values tidally filtered

Wind & Mixing

May 24 2015 15:00



Some Conclusions

- Barrier halted salinity intrusion in 2015
- Also a great science experiment
- Models played many roles
 - Bar for each was a different height
- Limiters to barrier + modeling are subtle:
 - Short season, long residence: sensitive to IC
 - Circulation in Franks Tract ... veg and wind
 - Lateral mixing between Old/Middle River

Tidy Up

- Synthesis with Delta Science:
 - Residence time
 - Nutrient modeling with CoSINE group
- Follow up with OMR experts about Old/Middle exchange
- Study design for Franks Tract
 - ... and some discussion of mobilization
- A good write-up

Acknowledgements

The DWR SCHISM team is:

Qiang Shu

Rueen-fang Wang

Kijin Nam

Eli Ateljevich

Collaborators

- Joseph Y.L. Zhang, VIMS
 - Dick Dugdale, RTC
 - Frances Wilkerson, RTC
 - Yi Chao, NASA JPL
 - Eric Danner, NOAA/NMFS
-sorry out of room

Tara Smith Chief, Delta Modeling Section

Francis Chung Chief, Modeling Support Branch