



**National Hydrography Dataset:**

**Hydro Spatial Data Review  
2016**



# NHD Stewardship

Jane Schafer-Kramer

GIS Analyst

Bay-Delta Office





# NHD Stewardship

Jane Schafer-Kramer

GIS Analyst

Bay-Delta Office





# NHD Stewardship

Jane Schafer-Kramer

GIS Analyst

Bay-Delta Office

California Water & Environmental Modeling Forum, 2016



# National Hydrography Dataset

- Surface water component of *The National Map*
- Lines, polygons, points, geometric network
- Companion to the Watershed Boundary Dataset
- USGS, US EPA, NRCS, and State Stewards

<http://nhd.usgs.gov/>

California Water Action Plan  
2016 Update

---



“Fund and revive the **National Hydrological** *[sic]* **Dataset** for California to improve high-quality framework geospatial data and the precision and accuracy of mapping and scientific studies.”

[http://resources.ca.gov/docs/california\\_water\\_action\\_plan/Final\\_California\\_Water\\_Action\\_Plan.pdf](http://resources.ca.gov/docs/california_water_action_plan/Final_California_Water_Action_Plan.pdf)



*A Technical Training Workshop*

**Getting to Know NHDPlus:  
Applying a National Geospatial  
Hydrologic Framework**

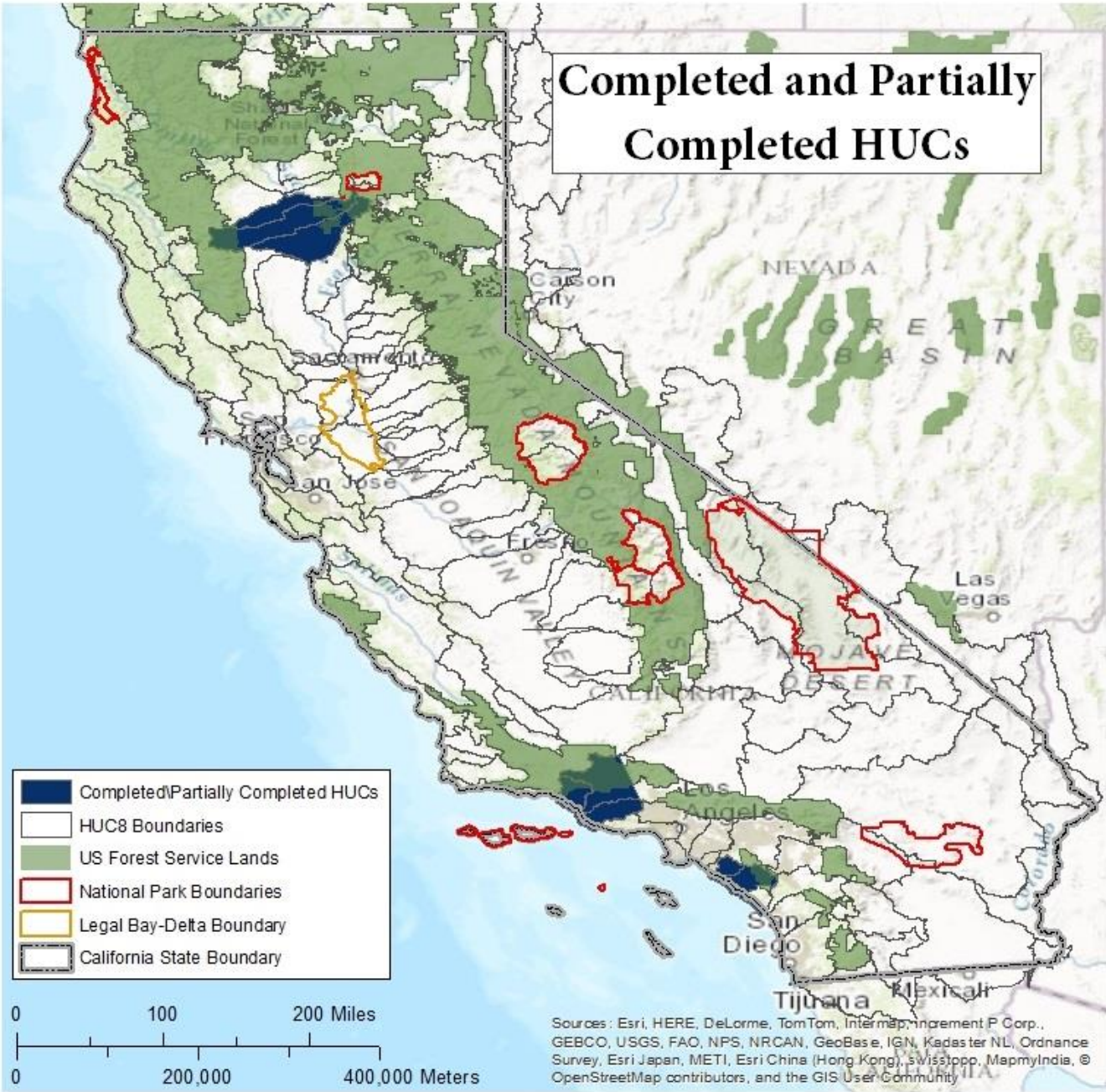
**July 14, 2016 - 8 to 5pm**

**July 15, 2016 - 8 to 12 noon**

<http://www.cwemf.org/workshops>

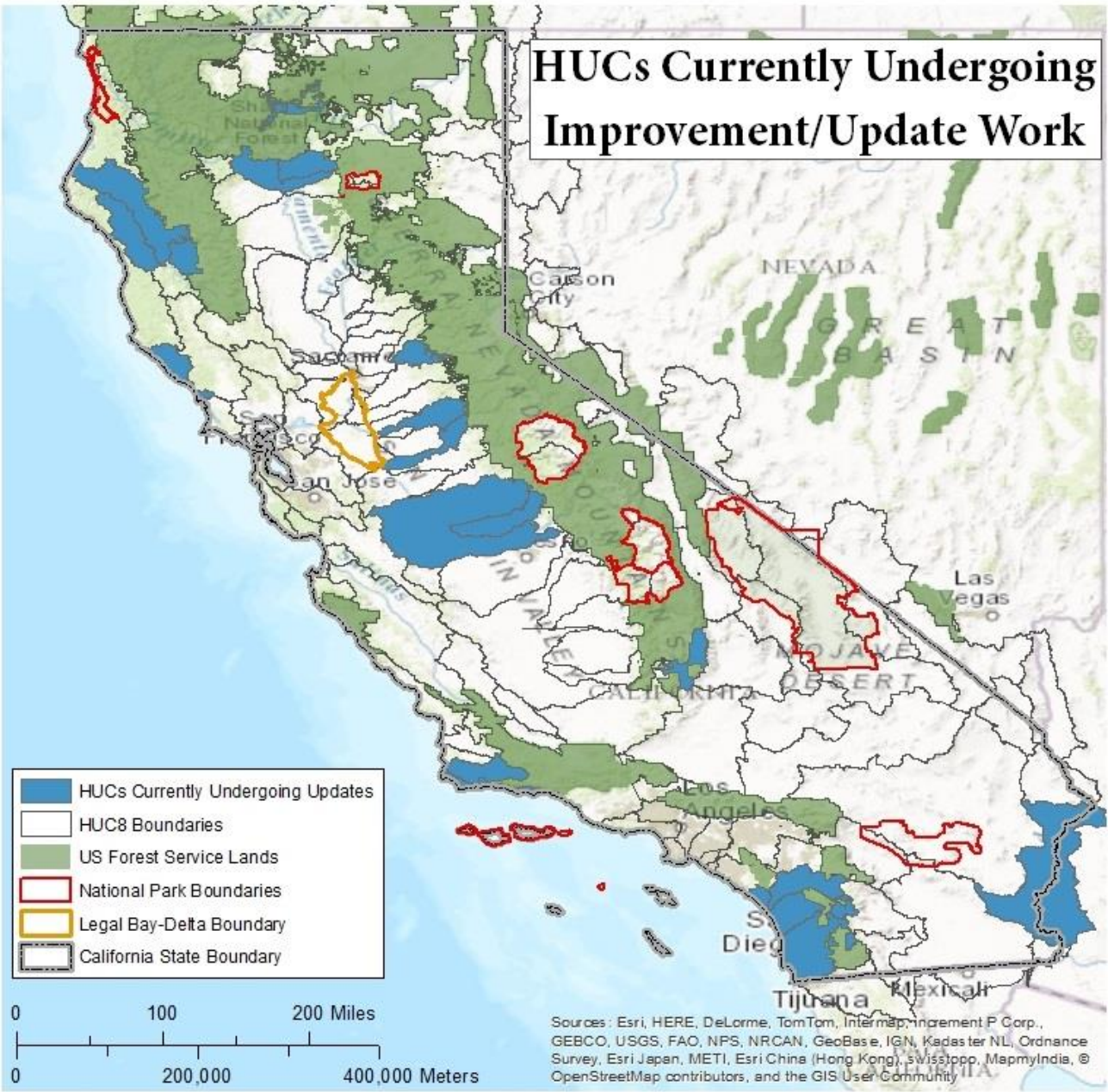


# Completed and Partially Completed HUCs

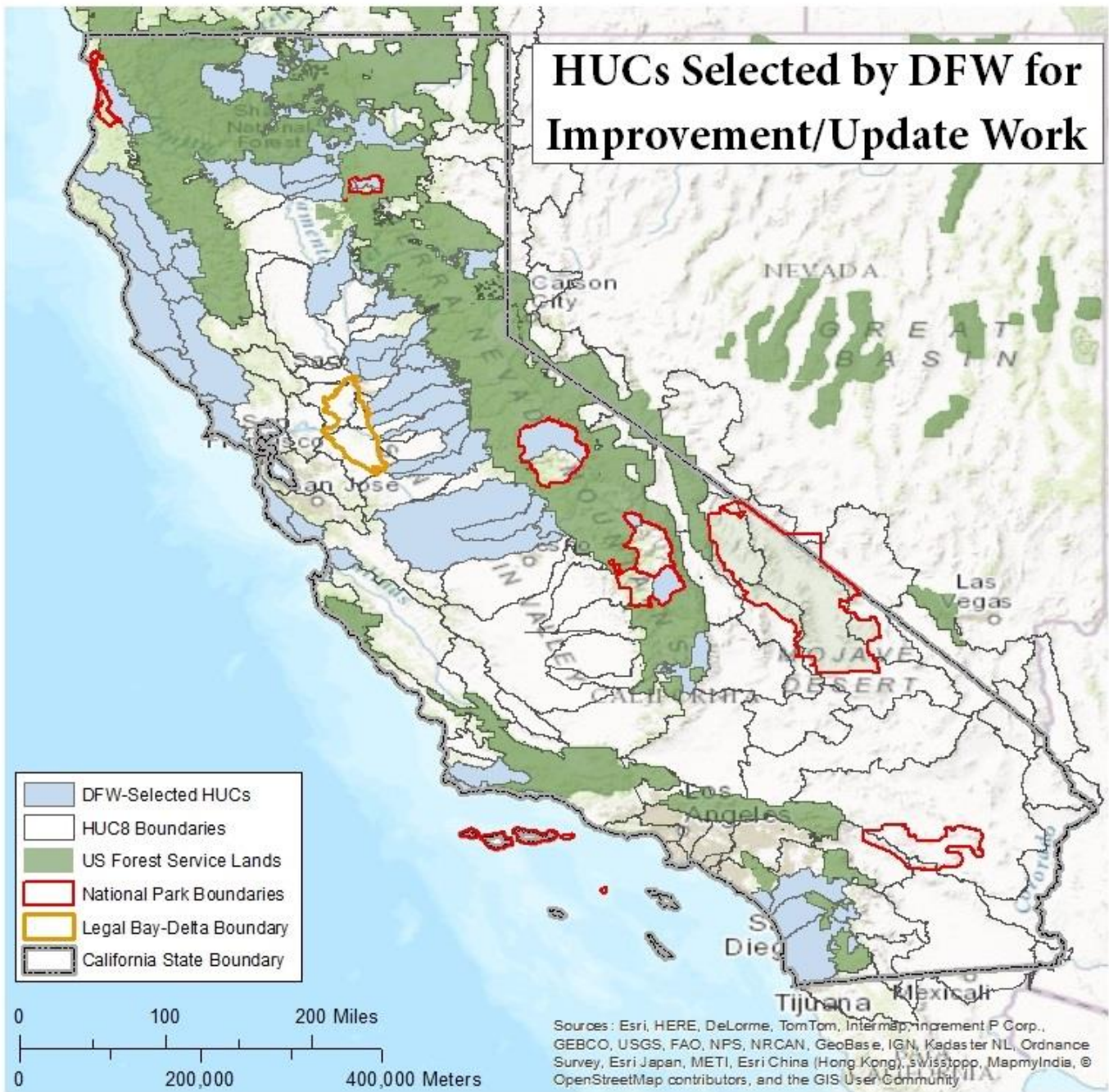




# HUCs Currently Undergoing Improvement/Update Work

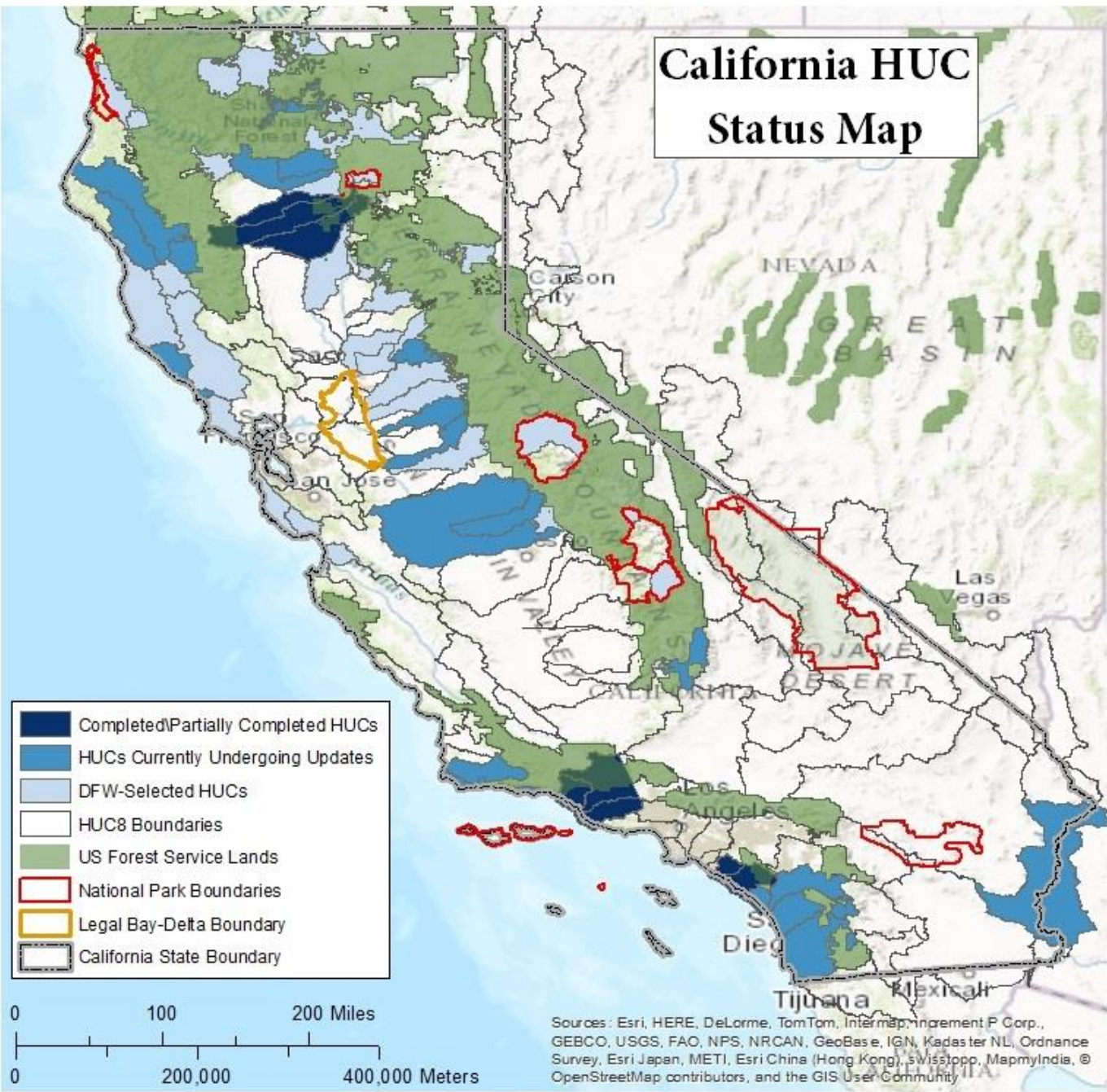


# HUCs Selected by DFW for Improvement/Update Work



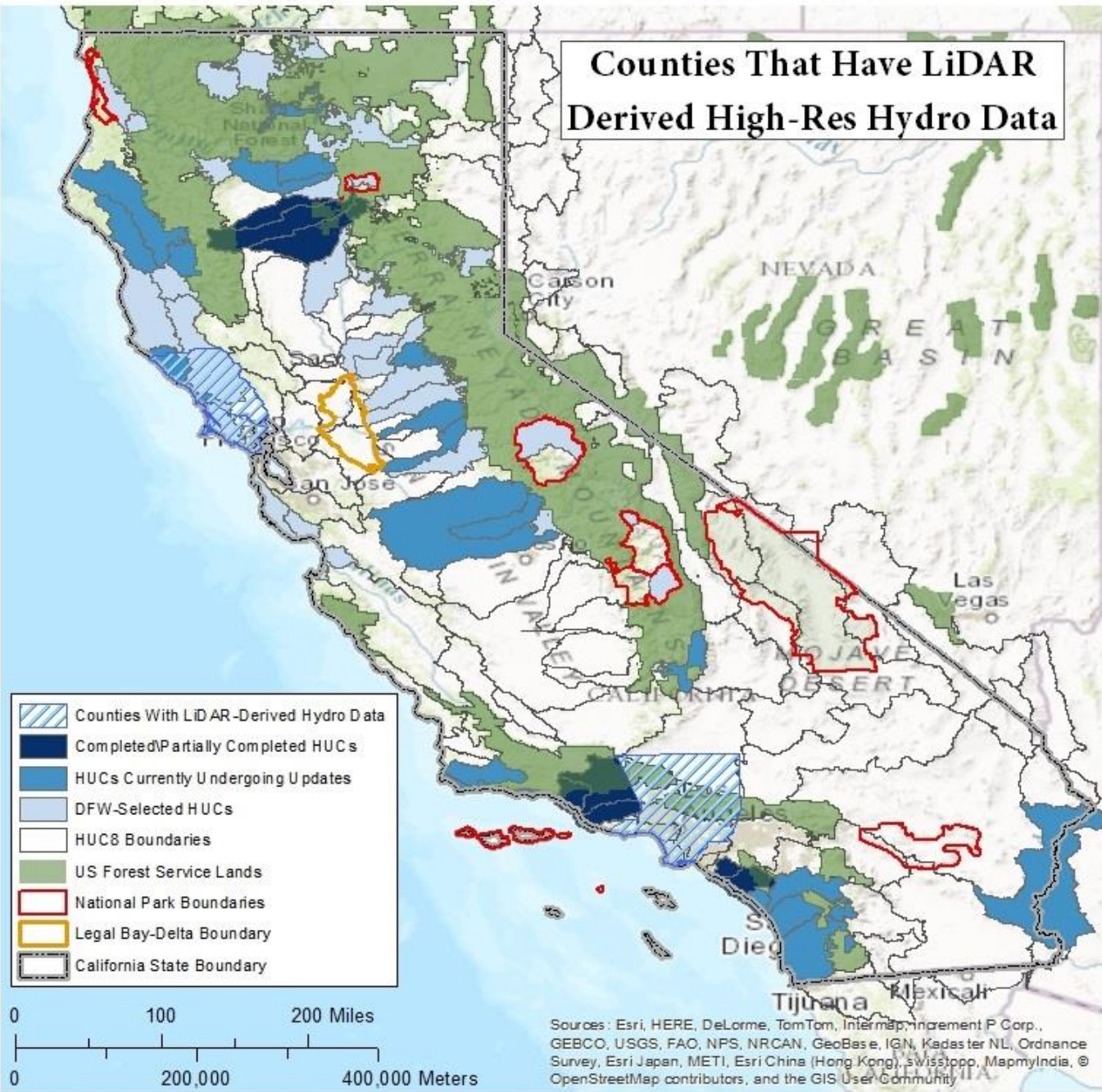


# California HUC Status Map





# Counties That Have LiDAR Derived High-Res Hydro Data



-  Counties With LiDAR-Derived Hydro Data
-  Completed/Partially Completed HUCs
-  HUCs Currently Undergoing Updates
-  DFW-Selected HUCs
-  HUC8 Boundaries
-  US Forest Service Lands
-  National Park Boundaries
-  Legal Bay-Delta Boundary
-  California State Boundary



Sources: Esri, HERE, DeLorme, TomTom, Intermap, increment P Corp., GEBCO, USGS, FAO, NPS, NRCAN, GeoBase, IGN, Kadaster NL, Ordnance Survey, Esri Japan, METI, Esri China (Hong Kong), swisstopo, MapmyIndia, © OpenStreetMap contributors, and the GIS User Community